

SORTING DRUM – TYPE: STE

Sorting was never so simple!

The SCHUMA sorting drum STE is used to the automatic sorting of sprues and mouldings.

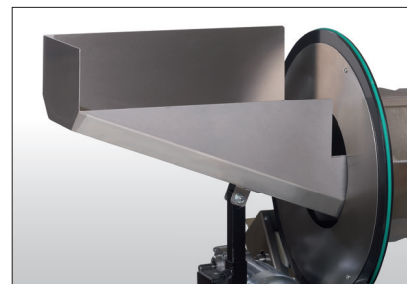
The parts are supplied, for example, by a SCHUMA conveyor. Parts from the sorting drum are supplied precisely using the insertion chute with adjustable angle. The separating gap of the drum can be infinitely adjusted without tools within a few seconds. The STE can therefore be used for sorting different parts. Thanks to the option of infinitely adjusting the height by means of adjustable telescopic feet, the height as well as the angle of inclination are freely selectable as required. A version of the STE with castors makes it easy to change the location. The STE is maintenance-free thanks to the design with an indirect drive unit, as well as non-abrasive plastic rods.

**Special space conditions?
We are happy to adapt the sorting drum
to your requirements as needed.**



Technical data

Separating gap	4 - 40 mm
Electrical connection	230V / 50Hz / 400V / 50Hz
Motor	Schneckengetriebemotor
Length	ca. 850 mm
Diameter	ca. 480 mm
Height	ca. 800 mm
Speed	constant or variable (only 230V)



Feed hopper for 90° angled tasks.



Adjustable perforated drum.



Perforated drum.